



Butler Health System

BUTLER MEMORIAL HOSPITAL

Butler Family Medicine Residency



Coming in 2024!





WELCOME!

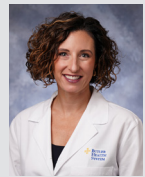
Welcome, and thank you for your interest in Butler Memorial Hospital's new Family Medicine Residency Program! We think you will find our innovative, 8-8-8, Clinic-First model to be the ideal setting to learn, train, and practice. We look forward to welcoming our first class in 2023 and hope you will be as excited about the program as we are!



Joe Dougherty, MD, CAQ-SM
Program Director,
Butler Family Medicine
Residency Program



Michael Fiorina, DO
Designated Institutional Official,
Butler Health System



Jessica Peek, DO
Associate Program Director,
Butler Family Medicine
Residency Program



A CALLING AND COMMITMENT TO IMPROVING LIVES.

Our mission is simple – to make a positive difference in the lives of people by providing compassionate, high-quality care and comfort, and inspiring health and wellbeing.

How? By providing a high-quality, academically challenging, and patient-oriented training program for those who have been called to serve as family medicine physicians.

Butler Family Medicine Residency (Butler FMR) is an innovative, cutting-edge residency program that puts patient-care at the forefront of training.

As a Clinic-First program, resident physicians maintain high continuity with their patients. Whereas the average FM resident only spends 13% of their total time in the office, residents at Butler FMR will spend more than 40% of their total residency time taking care of patients in the ambulatory setting. Residents work in care teams throughout their 3 years and will set the standard for patient care and outcomes in residency training programs. Our residents will not only be part of the Butler community, they will be part of the fabric of all of Butler County. Most residents will spend two years in a longitudinal private practice setting where they will see patients two half-days per month. These practices are in rurally-designated areas where residents will make a significant impact on the lives of those patients and their community. We provide significant elective time through all three years that will allow fellowship interested residents to gain adequate exposure to their future career goals.

BHS Butler Family Medicine Residency Program Highlights

- Innovative, unopposed, 8-8-8, Clinic-First model
- High continuity, team-based, all-encompassing patient care
- Two-week Family Medicine Clinic & rotation/inpatient mini-blocks means no rushing from the hospital to clinic
- 30 & 60 Minute Appointment times allow for a true patient-physician relationship
- Incorporated Point-of-Care Ultrasound use in all 3 years
- High volume Pediatric ED and Inpatient experiences at Children's Hospital of Pittsburgh
- Longitudinal Adult and Pediatric ambulatory medicine experiences
- Longitudinal experiences in Lifestyle Medicine, Geriatrics, and Nursing Home
- A Practice Management curriculum that includes experiences in Free Market Medicine & Direct Primary Care
- Dedicated weekly didactic sessions + Simulation Lab training
- Quarterly Journal Club at establishments throughout Butler County
- Sports Medicine and Palliative Care Tracks available
- Possible future developments of Sports Medicine, Palliative Care, and Wilderness Medicine Fellowships
- Easy access to Pittsburgh's pro sports teams, cultural events, shopping, and international airport
- Low Butler County taxes and cost of living & housing
- Easy access to nature with nearby lakes and rivers for boating, trails for hiking and biking, and more golf courses per capita than most anywhere in the country!
- Family-friendly residency with excellent work-life balance





Amanda Adams, MD
BHS Primary Care, Seven Fields

WELCOME TO BUTLER, PENNSYLVANIA

Butler Family Medicine Residency is located in Butler, Pennsylvania. We are located 30 miles north of Pittsburgh in central Butler County. We are a rurally-designated residency with quick and easy access to Pittsburgh, Cleveland, and Erie. Located within Butler County are Moraine State Park, the Butler-Freeport Trail, the North Country Trail, and the Lemieux Sports Complex, the training facility for the Pittsburgh Penguins. Residents have a plethora of housing options that fits their lifestyle. They can choose to live in a small town setting, such as Butler, Saxtonburg, or Slippery Rock. They can choose to live in the Pittsburgh suburbs of southern Butler County. Or they can choose to live in the relaxing rural environs that make up much of beautiful Butler County.

Butler County is home to high achieving public and private high schools. Higher education institutions in the area include: Carnegie Mellon University, the University of Pittsburgh, Penn State University branch campuses, Grove City College, Slippery Rock University, and the highest-ranked community college in Pennsylvania, Butler County Community College.



Scan this code to view the official Visit Butler County website or visit VisitButlerCounty.com



We are looking for dedicated, hard-working, and personable people who have been called to Family Medicine and want to make an impact on the people and communities in which they serve.

WHY CHOOSE BUTLER FAMILY MEDICINE RESIDENCY?

We understand the apprehension that one might have towards choosing a brand new residency program. But what some see as an obstacle, we see as an opportunity. With no senior residents to start with, interns will be mentored by friendly, knowledgeable, and experienced academic and community physicians. Our goal is to impart the Butler FMR values and knowledge right from the beginning, so that as our residents grow they can impart those same values and knowledge to the residents that follow. Our new residents and faculty will lay the foundation, with the goal of becoming a highly sought after, nationally-recognized program. If you're looking to be part of an innovative, unique, and landscape-changing program, Butler Family Medicine Residency is the place for you.



Scan this code for more information about our residency program or visit

ButlerHealthSystem.org

BHS Values



Compassion
We celebrate life, dignity and the value of human relationships



Trust
We are candid and honest



Integrity
We take responsibility for fulfilling the commitments that we make



Innovation
We seek opportunities to achieve the best possible outcomes for the people in our care



Quality
We consistently strive for excellence



Respect
We treat others as we would want to be treated



Service
We reach out to meet the needs of others



Stewardship
We cultivate the assets with which we have been entrusted



BUTLER FAMILY MEDICINE RESIDENCY
BUTLER MEMORIAL HOSPITAL

Butler FMR is an innovative, unopposed, 8-8-8, Clinic First residency based out of Butler Memorial Hospital (BMH). BMH is a 294-bed community hospital located in close proximity to state routes 8, 68, and 422. This infrastructure allows us to be the access hospital of choice for Butler County and the surrounding environs. Residents will see a wide array of illnesses, treatments, and stages in life. We are one of the nation's top-rated cardiac hospitals with a medical ICU that provides high acuity care. We have a blossoming Lifestyle Medicine Program with an incorporated food pantry and kitchen that gives our community access to high quality, nutritious food, as well as cooking classes to learn how to be nutritionally self-sufficient. We are affiliated with 15 primary care sites within a 30-minute drive that provide care to our small-town and rural communities.

>40,000
 Emergency Department Visits

15,000
 Medical Admissions

1,200
 Psychiatric Admissions

Nearly **600**
 Newborn deliveries

72
 Outpatient locations in an 8-county region

>\$260.5 million
 We contribute more than \$260 million to the region's economy.

The largest employer in Butler County.

>3,000
 Employees

>270
 Physicians

AWARD-WINNING CARE.

Consistently recognized for its quality of care, BHS is proud of recent accolades, which include:



**THE LEAPFROG GROUP
 "A" HOSPITAL SAFETY GRADE AND "STRAIGHT A's" 2017-2022**

The designation recognizes Butler Memorial Hospital's efforts in protecting our patients from harm and meeting the highest safety standards throughout the country.



AMERICAN HEART ASSOCIATION/AMERICAN STROKE ASSOCIATION'S GET WITH THE GUIDELINES® - STROKE GOLD PLUS QUALITY ACHIEVEMENT AWARD with Target: StrokeSM and Type 2 Diabetes Honor Roll

The care our patients receive at Butler Health System is our number one priority. That's why we're proud to be among the hospitals recently recognized by the American Heart Association/American Stroke Association for our excellence in implementing the Get With The Guidelines program.



**THE LEAPFROG GROUP
 TOP HOSPITAL 2021**

The elite Top Hospital award recognizes the highest quality hospitals as identified through the Leapfrog Hospital Survey. Less than 5% of all eligible facilities receive the award, widely considered among the most prestigious an American hospital can receive.



NEWSWEEK BEST MATERNITY HOSPITAL 2022

The distinction recognizes facilities that have excelled in providing care to mothers, newborns, and their families, as verified by standards for maternity care on evidence-based, nationally standardized metrics. This includes lower rates of early elective delivery, NTSV C-section, and episiotomy, as well as demonstrated a commitment to safety.



AMERICAN COLLEGE OF CARDIOLOGY'S NCDR ACTION REGISTRY PLATINUM PERFORMANCE ACHIEVEMENT AWARD

Butler Health System has consistently demonstrated sustained achievement in the ACTION Registry and has performed at the top level of standards for specific performance measures. Full participation in the registry engages hospitals in a robust quality improvement process using data to drive improvements in adherence to guideline recommendations and overall quality of care provided to heart attack patients.



ACC CHEST PAIN CENTER WITH PRIMARY PCI ACCREDITATION

As an Accredited Chest Pain Center, Butler Health System ensures that patients who arrive at the hospital complaining of chest pain or other symptoms of a heart attack receive the treatment necessary during the critical window of time when the integrity of the heart muscle can be preserved.

HFAP PRIMARY STROKE CERTIFICATION



BMH has earned the HFAP Seal of Excellence for Primary Stroke Certification. This designation indicates that our facility demonstrates excellence and the capacity to care to stabilize and treat acute stroke patients safely and efficiently.



THE UPMC HIP AND KNEE JOINT REPLACEMENT SURGERY CENTER OF EXCELLENCE PROGRAM

This designation recognizes only those surgical facilities and orthopedic surgeons who demonstrate high-quality outcomes, low complication rates, and optimal patient experience for UPMC Health Plan members.



1 Hospital Way, Butler, PA 16001